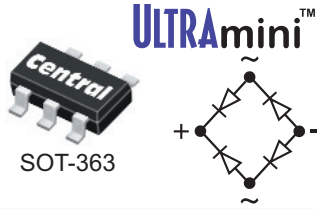


# CMKBR-6F SMD Bridge Rectifier



## features

- Monolithic Chip Construction
- Fast Switching
- Closely Matched Electrical Characteristics

## description

The Central Semiconductor CMKBR-6F is the world's smallest silicon bridge rectifier, packaged in a SOT-363 surface mount case. The monolithic chip design provides superior  $V_F$  matching between each diode in the bridge. This device is ideal for today's smallest electronic devices, which require fast switching and closely matched  $V_F$  in a small package size.

Sample Devices  
available  
upon request.



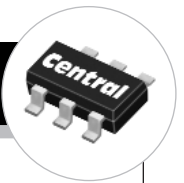
## selection guide



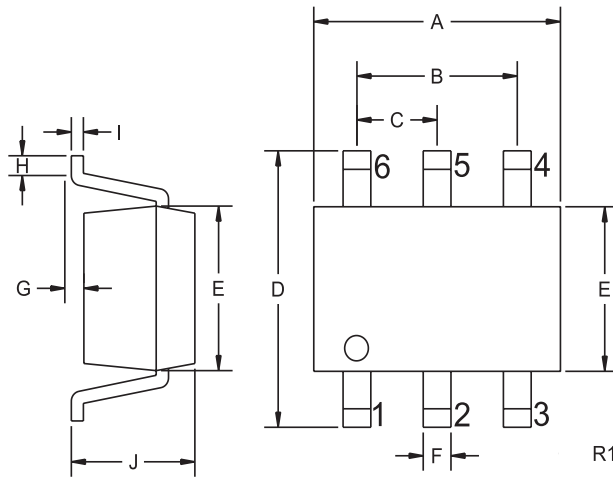
		Other Surface Mount Bridge Rectifiers Manufactured by Central <sup>TM</sup>						
$I_O$ (AMPS)	0.14		0.5	1.0			2.0	
@ $T_A$ (°C)	25	25	40	50	40	40	25	25
$I_{FSM}$ (AMPS)	-	-	30	50	50	50	20	30
CASE	SOT-363	SOT-143	HD DIP	SMDIP			HD DIP	
$V_{RRM}$ (VOLTS)	FAST RECOVERY	FAST RECOVERY	GENERAL PURPOSE	GENERAL PURPOSE	FAST RECOVERY	ULTRA FAST RECOVERY	LOW $V_F$ SCHOTTKY	SCHOTTKY
40	-	-	-	-	-	-	CBRHDSH1-40L	CBRHDSH2-40
60	<b>CMKBR-6F</b>	CMFBR-6F	-	-	-	-	-	-
100	-	-	-	-	-	CBR1U-D010S	-	-
200	-	-	CBRHD-02	CBR1-D020S	CBR1F-D020S	CBR1U-D020S	-	-
400	-	-	CBRHD-04	CBR1-D040S	CBR1F-D040S	-	-	-
600	-	-	CBRHD-06	CBR1-D060S	CBR1F-D060S	-	-	-
1000	-	-	CBRHD-10*	CBR1-D100S	CBR1F-D100S	-	-	-
$V_F$ max @ $I_F$	1.0V @ 20mA	1.0V @ 20mA	1.0V @ 400mA	1.1V @ 1.0A	1.3V @ 1.0A	1.05V @ 1.0A	440mV @ 1.0A	500mV @ 2.0A
$I_R$ max @ $V_{RRM}$	10nA @ 50V	10nA @ 50V	5.0µA	10µA	5.0µA	5.0µA	50µA @ 40V	50µA @ 40V
$t_{rr}$ (60V)	1.0µs (typ.)	1.0µs (typ.)	-	-	-	-	-	-
$t_{rr}$ (100-400V)	-	-	-	-	200ns	50ns	-	-
$t_{rr}$ (600V)	-	-	-	-	300ns	-	-	-
$t_{rr}$ (1000V)	-	-	-	-	500ns	-	-	-

\* Available on special order, please consult factory

# CMKBR-6F SMD Bridge Rectifier



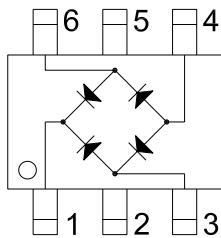
## Mechanical Specifications - SOT-363



SYMBOL	DIMENSIONS			
	INCHES		MILLIMETERS	
	MIN	MAX	MIN	MAX
A	0.073	0.085	1.85	2.15
B	0.051		1.30	
C	0.026		0.65	
D	0.075	0.091	1.90	2.30
E	0.043	0.055	1.10	1.40
F	0.006	0.012	0.15	0.30
G	0.000	0.004	0.00	0.10
H	0.010	-	0.25	-
I	0.004	0.010	0.10	0.25
J	0.031	0.039	0.80	1.00

SOT-363 (REV: R1)

### Pinout

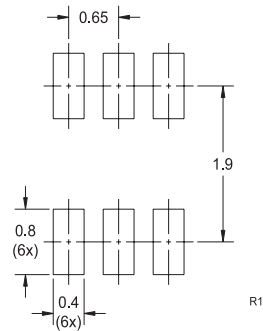


#### LEAD CODE:

- 1) (+) DC
- 2) NC
- 3) AC
- 4) (-) DC
- 5) NC
- 6) AC

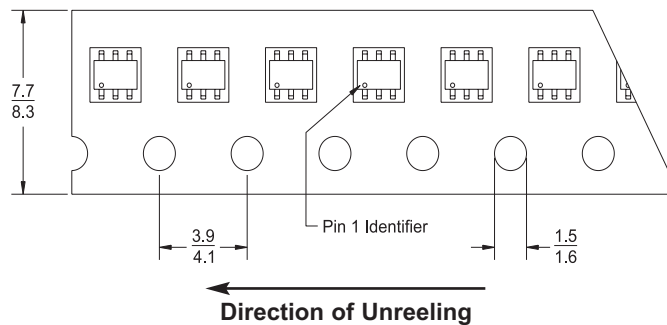
#### MARKING CODE: CBR3

### Mounting Pad Geometry (Dimensions in mm)



### Tape Dimensions and Orientation (Dimensions in mm)

Tape Width: 8mm



\* Devices are taped in accordance with Electronic Industries Association Standard EIA-481-1-A

**Central**<sup>TM</sup>  
Semiconductor Corp.

Innovations in Discrete  
Semiconductors

For further information contact:  
Sales at Central Semiconductor Corp.  
(631) 435-1110 or visit our website at:  
[www.centalsemi.com](http://www.centalsemi.com)

145 Adams Avenue • Hauppauge • New York • 11788 • USA • Tel:(631) 435-1110 • Fax:(631) 435-1824

PA CMKBR-6F